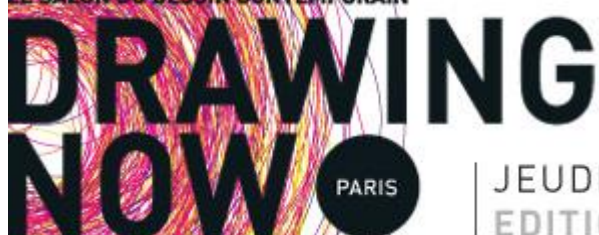




GALERIE HOUG – STAND A26@DNP 2013

LE SALON DU DESSIN CONTEMPORAIN



JEUDI 11/DIMANCHE 14 AVRIL 2013
EDITION 7 - CARROUSEL DU LOUVRE

GALERIE HOUG

art contemporain

43, rue Auguste Comte

69002 LYON - Fr.

T. +33 (0)478 429 850

F. +33 (0)478 379 703

www.galeriehoug.com



COMITÉ PROFESSIONNEL DES GALERIES D'ART



ARTISTE EN FOCUS

SUSANNE THEMLITZ

Dans le travail de Susanne Themlitz, son univers se dessine d'après des archives mémorielles, plus photographiques que filmiques ; une succession d'images, instantanés des conditions du souvenir.

Grâce à un travail de mise-en-scène, même précaire, tout est ensuite ré-invoqué : scènes mélangeant personnages, objets usuels, photographies, pellicules et dessins, bois et végétaux le tout reconstituant ainsi un environnement idéal pour une population d'êtres imaginaires.

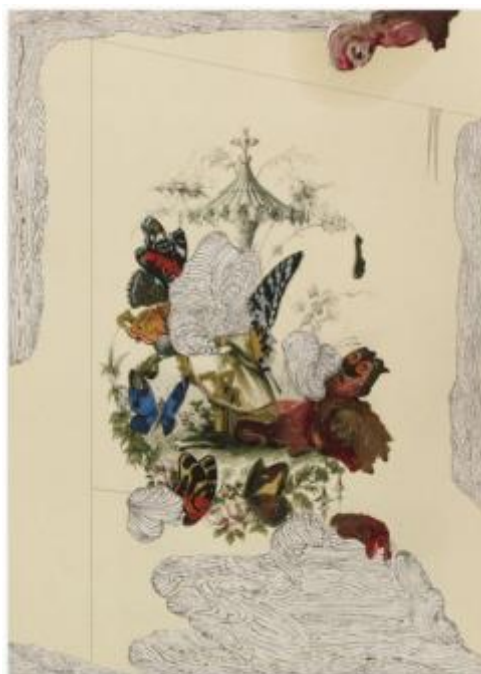
Ces environnements sont toujours éloignés de la préciosité et de l'urbain, nous plongeant dans un monde liant coutume agreste et vie animale à proprement parlé.

(...)

Themlitz nous livre une histoire naturelle tout en somnolence, qui met en évidence la relation de transition entre fixité et légèreté, entre enracinement et fuite. Ici la potentialité est précairement capturée. Et si en effet, dans notre sommeil nous nous reconnectons à la fois avec notre condition primitive et notre humanité, l'état de somnolence tenant à bout-de-bras ces deux conditions liées.

Une histoire naturelle de la somnolence (extrait) de **Ruth Rosengarten**

SUSANNE THEMLITZ / visuels



Bonjour Sr. G., 2012

Huile, poudre graphite et acrylique sur une impression numérique de la reproduction 'Les Fleurs Animées' by J. J. Grandville

30 x 21 cm, 2012



Entre el tiempo., 2010

Résine synthétique peinte sur du papier mâché et techniques mixtes
140 x 150 x 60 cm



Entre el tiempo., 2010

Résine synthétique peinte sur du papier mâché et techniques mixtes
60 x 200 x 60 cm



Série 2013

Aquarelle, crayon, papier et huile sur toile
100 x 113,5 cm



Série 2013

Aquarelle, crayon, papier et huile sur toile
100 x 113,5 cm



Série 2013

Aquarelle, crayon, papier et huile sur toile
190 x 160 cm



Série 2013

Aquarelle, crayon, papier et huile sur toile
190 x 160 cm



CURRICULUM VITAE

Née à Lisbonne en 1968. Vit à Cologne.

EXPOSITIONS PERSONNELLES

2013 - Oh!, Aranapoveda Gallery, Madrid (ES)

- Still Alive (se bifurcan y solapan), Ángeles Banos Gallery, Badajoz (ES)

2012 - Drei Zeichnungen und ein Wesen, Galerina Steiner, Berlin (DE)

2011 - Entre o Tempo (Between the Time), Vera Cortês Art Agency, Lisboa (PT)

2010/11 - Entre el Tiempo (Between the Time), Museum for Modern Art Santander (ES)

2010 - 4 Containers, 1 Drawing and One Landscape / On Board of Victor Hugo, P28, Lisbon (PT)

- Silence / 5 elements in bronze and aluminium, probably detached from a graphite and oil drawing, yet to be realized, Ermida Nossa Senhora da Conceição, Lisbon (PT)

2009 - Migratory Landscape / Quand le chat est parti, les souris dansent, MCO Arte Contemporânea, Oporto (PT)

- O Estado do Sono (The State of Drowsiness), Paiol / Museum for Contemporary Art, Elvas (PT)

- At Eye Level, Vera Cortês Art Agency, Lisbon (PT)

2008 - O Estado do Sono (The State of Drowsiness), Pavilhão Branco / Municipal Museum, Lisbon (PT)

2007 - Vertebrados e Invertebrais II (The Vertebral & The Invertebrate II), MCO Arte Contemporânea, Oporto (PT)

2006 - Extroversão (Extroversion), Vera Cortês Art Agency, Lisbon (PT)

- O Estado do Sono (The State of Drowsiness), Culturgest, Oporto (PT)

- Of Subterranean Life, Casa da Cerca, Almada (PT)

- Themlitzarium, Casa das Artes, Tavira (PT)

2005 - Metamorfopsia Dois Mil e Cinco (Metamorphopsia Two Thousand and Five), Carmona e Costa Foundation, Lisbon (PT)

- Vertebrados e Invertebrais (The Vertebral & The Invertebrate), Ponte de Sor Municipal Library, Ponte de Sor (PT)

2004 - Zeit Paradies, Carla Stützer Gallery, Cologne (DE)

- Paraíso Público / Zeit Paradies, Emmerico Nunes Cultural Centre, Sines (PT)

2003/04 - Anthropophobias & Etholomanias / Anonymous Rivals Borderers, Flottmannhallen, Herne (DE)

2003 - Modus Vivendi. Genus Mutabile / Anonymous Venetical Creatures, Luís Serpa Gallery, Lisbon (PT)

- Ignoramus et Ignorabimus / Lunar Documentation, Promontório Gallery, Lisbon (PT)

- Video, Slowmotion, ESTGAD, Caldas da Rainha (PT)

2001 - From the Private Life of the Parasites, Outsiders and Borderes, Carla Stützer Gallery, Cologne (DE)

2000 - The Egomaniacs and the Imperfects, Manuel Ojeda Gallery, Las Palmas, Gran Canaria (ES)



-The Egomaniacs and the Imperfects, Gallery Luís Serpa Projectos, Lisbon (PT)

1999 Quiproquo • After the Marvellous Travels of Georges Méliès, Chiado Museum, Lisbon (PT)

- The Good, the less Good and other Survivors, Schneiderei Gallery, Cologne (DE)

1998 - Portable Landscapes • Strange Things Happen When You Are Abroad, Bores & Mallo Gallery, Cáceres (ES)

1997 - Für Fremde, Gallery Konrad Mönter, Meerbusch (DE)

1996 - Sculpture, Schneiderei Gallery, Cologne (DE)

- Espectros, Luís Serpa Gallery, Lisbon (PT)

- Fontes, Associação dos Arquitectos de Portugal, Lisbon (PT)

EXPOSITIONS COLLECTIVES

2013 - Collecting Mushrooms is a Dangerous Attitude, Luís Serpa Gallery, Lisbon (PT)

2012 - Artist's Books, Ángeles Banos Gallery, Badajoz (ES)

- The Brocense Art Award, El Brocense, Cáceres (ES)

- Infinite Tasks. When Art and Book Unbind Eachother, , Calouste Gulbenkian Museum, Lisbon (PT)

- Dyssomnia / Experimentierzimmer, Hans-Peter-Zimmer Foundation, Düsseldorf (DE)

- Otras Flores del Mal, Aranapoveda Gallery, Madrid (ES)

- O Fim do Mundo, Neumünster Abbey, Luxembourg (L)

- Outdoor, Lisbon & Oporto (PT)

2011 - Todo lo visible mi afecta, Ángeles Banos Gallery, Badajoz (ES)

- Roads to Whatever / Works from the CAM Collection, Calouste Gulbenkian Fundação, Lisbon (PT)

- Eu Podia Fazer Isto, Espaço Atmosferas, IPA, Lisbon (PT)

- Gabinete de Curiosidades #1/ Constkamer, Luís Serpa Projectos Gallery, Lisbon (PT)

2010 - The Collection of António Cachola, Berardo Museum, Lisbon (PT)

- And Than Again, Pavilhão Preto, Municipal Museum, Lisbon (PT)

- Invisible Lines, Rua Cavaleiros Espora Dourada, Torres Vedras (PT)

- Banyan Project, Kunstgalerie Fürth (DE)

- Banyan Project, Fiji Museum (FJ)

- Banyan Project, Cook Islands Museum (CK)

- Marginália, d'après Edgar Allan Poe, Plataforma Revólver, Lisbon (PT)

- O dia mais longo do ano, Municipal Theatre, Almada (PT)

2009 - She is a Femme Fatale, Berardo Museum, Lisbon (PT)

- BES, Lisbon (PT)

- Além do Tempo, Dentro do Museu, Nacional Museum Soares dos Reis, Oporto (PT)

- Dialogue Boxes on Street Windows / Allgarve, Faro (PT)

- Our Time / Video Screening Project, Smallbox, Psychiatric Hospital Centre, Lisbon (PT)

- 16 Anos de Cumplicidade na Arte, Arts' and Culture Centre, Ponde de Sor (PT)

- Diferença e Simulacro, Junho das Artes, Óbidos (PT)

- Banyan Project, The Paul Gauguin Museum / Centre des Metiers d'Art Tahiti (PF)

- Banyan Project, Körnerpark Gallery, Berlin (DE)

- Banyan Project, National Gallery Bangkok (TH)

- Lá Fora, Electricity Museum, Lisbon (PT)



- 2008** - Dibujo Contemporáneo, Centenera Jaraba Foundation, Alovera (ES)
- Aquilo Sou Eu, Carmona & Costa Foundation, Lisbon (PT)
- Domésticos e Selvagens, MCO Arte Contemporânea, Oporto (PT)
- Sovereign European Art, Sommerset House, London (GB)
- X Mostra International Union Fenosa, MACUF, A Coruña (ES)
- Quel Air Clair.../ The Ar.Co Collection, Pavilhão Preto / Municipal Museum, Lisbon (PT)
- Lá Fora, Museu da Presidência, Viana do Castelo (PT)
- Parangolé, Museum for Contemporary Art Patio Herreriano, Valladolid (ES)
- Bichos, Entre o Homem e Animal, Rafael Bordallo Pinheiro Museum, Lisbon (PT)
- 2007** - Banyan Project, BHU University, Varanasi (IN)
- Banyan Project, Meta House, Phnom Penh (KH)
- Open Garden, Palácio de Belém, Lisbon (PT)
- Amadeo de Souza-Cardoso Award, Municipal Museum, Amarante (PT)
- O Banquete, Vera Cortês Art Agency, Lisbon (PT)
- Transfer, Palácio da Galeria, Tavira (PT)
- BES Photo, Centro Cultural de Belém, Lisbon (PT)
- Watercolour Show, MCO Arte Contemporânea, Oporto (PT)
- Armanda D Ângela F Ana V Fernanda F Maria L Susanne T, Centro Cultural de Lagos, Lagos (PT)
- 2006** - Über Kopf, Flottmannhallen, Herne (DE)
- Acchrochage 2, Palácio de Santos, French Embassy, Lisbon (PT)
- Finalmente, Carla Stützer Gallery, Cologne (DE)
- 2005** - The Social Contract, Bordallo Pinheiro Museum, Lisbon (PT)
- Platen, Themnitz, Walter, Boisseréestraße 5, Cologne (DE)
- 2004/05** Imaginary Lives, Calouste Gulbenkian Museum, Lisbon (PT)
- Finalmente, Carla Stützer Gallery, Cologne (DE)
- Entre Duas Luzes, Parliament, Lisbon (PT)
- 2004** - Horizonte(s), 20 Years Luís Serpa Projectos Gallery, Cordoaria Nacional, Lisbon (PT)
- Die Jägerprüfung, Peter Tedden Gallery & Kunstverein Oberhausen, Oberhausen (DE)
- Wild Life, Sommerpalast, Neuss (DE)
- 2003** - Videolounge, part of the exhibition of Hans-Peter Feldmann, Museum Ludwig, Cologne (DE)
- Colecção de Arte Contemporânea da Caixa Geral de Depósitos, MEIAC, Badajoz (ES)
- 2002** - Zum Jahresende, Carla Stützer Gallery, Cologne (DE)
- Drawing Award, Vieira da Silva Museum, Lisbon (PT)
- Acchrochage/Sculpture, Luís Serpa Gallery, Lisbon (PT)
- Acchrochage/Drawing, Luís Serpa Gallery, Lisbon (PT)
- Contemporary Art • Acquisitions of the Caixa Geral de Depósitos, Culturgest, Lisbon and Oporto (PT)
- Some People, Carla Stützer Gallery, Cologne (DE)
- 2001** - Köln Kunst 6, Josef-Haubrich-Kunsthalle, Cologne (DE)
- A Imagem do Momento, Pavilhão Branco, Municipal Museum, Lisbon (PT)
- Sculpture Award, D. Luís I Foundation, Cascais (PT)
- Odisseia no Tempo, Luís Serpa Projectos Gallery, Lisbon (PT)
- 2000** - Depósito, Casa Fernando Pessoa, Lisbon (PT)
- Spanding an Intire Ocean, Culturgest, Lisbon (PT)
- O Centre de Art em Montrouge, Sociedade Nacional de Belas Artes, Lisbon (PT)



- Sala do Veado, Natural History Museum, Lisbon (PT)
- Salon D'Art Contemporain, Centre Culturel et Artistique de Montrouge (FR)
- 1999** - Le Dernier Cri 99/00, Carla Stützer Gallery, Cologne (DE)
- Accrochage, Luís Serpa Projectos Gallery, Lisbon (PT)
- Review • Preview, Gallery Schneiderei, Cologne (DE)
- The Good, the less Good and other Survivors, Bienal da Maia (PT)
- Marae, Enschede (NL)
- 1998** - Seltsam, part of the exhibition Lieblingsort Köln, Schnütgen-Museum, Cologne (DE)
- A Figura Humana na Escultura Portuguesa do Séc. XX, Oporto (PT)
- Drawing, Schneiderei Gallery, Cologne (DE)
- 1997** - Imagem sem Imagem, Museu de Évora (PT)
- Expecting, from where the wind blows, Bremen (DE)
- 1996/97** - Hors Catalogue, Maison de la Culture d'Amiens (FR)
- 1996** - Artists' Books, National Library Austria, Vienna, Austria (A)
- Bildloses Abbild, Gütersloh (DE)
- Kunstaanmoedigingsprijs Amstelveen, Amsterdam (NL)
- 1995** - Paula Soares & Susanne Themnitz, Luis Serpa Gallery, Lisbon (PT)
- VI Bienal Caldas da Rainha, Caldas da Rainha (PT)
- 1994** - Luisenstraße 25, Studios A.R. Penck, Düsseldorf (DE)
- Formas únicas da Continuidade no Espaço, Luis Serpa Gallery, Lisbon (PT)
- Salon D'Art Contemporain, Centre Culturel et Artistique de Montrouge (FR)
- 1993** - V Bienal Caldas da Rainha, Caldas da Rainha (PT)
- Finalistas do Ar.Co., Ministry of Finance, Lisbon (PT)
- 4 aus Lissabon, Janine Mautsch Gallery, Cologne (DE)
- 1992** - Ar.Co.'s Awardees in the Royal College of Art, Calouste Gulbenkian Foundation, Lisbon (PT)

FOIRES D'ART CONTEMPORAIN

- 2013** - Drawing Now, Paris: Houg Gallery
- Art 13, London: Aranapoveda Gallery
- Arco, Madrid: Vera Cortês Art Agency
- 2012** - Slick Art Fair, Paris: Houg Gallery
- Scope Basel, Aranapoveda Gallery
- ArtBa, Buenos Aires: Vera Cortês Art Agency
- Just Madrid: Ángeles Banos Gallery
- Art Santander: Ángeles Banos Gallery
- 2011** - ArtRio, Rio de Janeiro: Vera Cortês Art Agency
- Arte Lisboa: Ángeles Banos Gallery
- Arco, Madrid: Vera Cortês Art Agency
- 2009** - Puro Arte, Vigo, MCO Arte Contemporânea
- Arte Lisboa, Lisbon: MCO Arte Contemporânea
- 2008** - Arte Lisboa, Lisbon: MCO Arte Contemporânea



2007 - Arte Lisboa, Lisboa: Vera Cortês Art Agency & MCO Arte Contemporânea

- Foro Sur, Cáceres: Vera Cortês Art Agency
- Arco, Madrid: Vera Cortês Art Agency
- Docks Art Fair, Lyon: MCO Arte Contemporânea

2006 - Arte Lisboa, Lisbon: Vera Cortês Art Agency

- Art/Salamanca, Salamanca: MCO Arte Contemporânea
- Loop Video Art, Barcelona: Vera Cortês Art Agency

2003 - Arte Lisboa, Lisbon: Luís Serpa Projectos Gallery

- Arco, Madrid: Luís Serpa Projectos Gallery

2002 - Arte Lisboa, Lisbon: Luís Serpa Projectos Gallery

2001 - Arco, Madrid: Gallery Manuel Ojeda

2000 - Marca 2000, Funchal, Madeira: Projectroom Luís Serpa Projectos Gallery

- Arco, Madrid: Gallery Bores & Mallo & Luís Serpa Projectos Gallery

1999 - Arco, Madrid: Gallery Bores & Mallo (ES)

1998 - Arco, Madrid: Luís Serpa Projectos Gallery (ES)

SUBVENTIONS

1997-98 - Centro Nacional de Cultura: Portable Landscapes

1997 - Deutsch-Französisches-Jugendwerk: Quiproquo • After the Marvellous Travels of Georges Méliès

1993-95 - Calouste Gulbenkian Foundation: Meisterschüler at Kunstakademie Düsseldorf

1992 - Calouste Gulbenkian Foundation: Exchange Program with The Royal College of Art, London

1991-93 - Ar.Co.: Sculpture and Drawing

1988 - EC: Sculpture in Italy

PRIX ET RÉCOMPENSES

2012 - Drawing: The Brocense Art Award (ES)

2007 - Video: Amadeo de Souza-Cardoso (PT)

2002 - Video: Figueira da Foz International Film Festival (PT)

2001 - Sculpture: City Desk (PT)

2000 - Video: Dr. Best Foundation, Cologne (DE)

1999 - Video: 4th National Video Festival, Ovar (PT)

1993 - Drawing: V Biennial, Caldas da Rainha (PT)



AUTRES ARTISTES PRESENTES SUR LA FOIRE

Jemima BURRILL
Cristine GUINAMAND
Eric MANIGAUD
Laurent PERNEL
Mathias SCHMIED



CONTACTS

Romain Houg

Co-directeur

romain@galeriehoug.com

Bérengère Ribes

Assistante – coordinatrice

+33 (0)659 030 365

GALERIE HOUG

art contemporain

43, rue Auguste Comte (*nouvelle adresse*)

69002 LYON - Fr.

T. +33 (0)478 429 850

F. +33 (0)478 379 703

www.galeriehoug.com

